



# **NATIONAL RESPONSE TO THE FLOOD DISASTER**



**May 2008**

## Table of contents

<b>1. INTRODUCTION.....</b>	<b>3</b>
<b>2. FLOOD COORDINATION STRUCTURE.....</b>	<b>3</b>
<b>3. IMPACT OF FLOOD DISASTER.....</b>	<b>4</b>
3.2    NUMBER OF DEATHS REPORTED.....	4
3.3    HEALTH IMPACT .....	4
<b>5. FINANCE .....</b>	<b>5</b>
<b>6. DONATIONS .....</b>	<b>5</b>
<b>7. EMERGENCY RELIEF STOCK .....</b>	<b>6</b>
<b>8. CHALLENGES: .....</b>	<b>7</b>
<b>9. CURRENT SITUATIONAL UPTADE: .....</b>	<b>7</b>

## **1. Introduction**

Traditionally flooding in Namibia has been known to occur in the flood plains along the major rivers of Zambezi, Kwando, Kavango, Kunene, Fish rivers (Mariental town), the lower Fish and Orange rivers. An unprecedented flood hit Omusati, Oshana, Ohangwena and parts of Oshikoto regions in February 2008. This is largely attributed to the heavy rainfall on both sides of Namibia's northern border with Angola.

An estimated total of 71,070 people, 94 schools with a total enrolment of 7,486 learners have been affected in the four regions with Omusati and Oshana suffering the worst. Some 4,662 people were forced to relocate and were being housed in relocation camps.

In **Caprivi 1,080** people of which 165 are learners were severely affected and were forced to relocate. Apart from destroying homes, the flood submerged crop fields, damaged roads, business infrastructures, disrupted water supplies and sewerage works.

The President of the Republic of Namibia H.E. Hifikepunye Pohamba declared a state of disaster on 5 March 2008 with an appeal to the international community for assistance. A national response by Government, Namibia Red Cross Society as well as the UN agencies was instituted immediately following reports of the flood.

Two flood disaster assessments were conducted one by the Office of the Prime Minister and the other jointly by Government, Namibia Red Cross Society and the UN agencies. The reports were distributed to stakeholders including some of the Namibian embassies. Donations in cash and in kind to assist flood victims have been received from the local business communities, individuals and the international community.

Some coordination problems were experienced at operational level during the first few weeks of the flood emergency. The Secretary to Cabinet appointed a senior Permanent Secretary of Ministry of Regional Local Government Housing and Rural Development and four other members from the Namibia Defence Forces and Directorate Emergency Management and MGLHRD to support coordination efforts at operational level.

## **2. Flood Coordination Structure**

The Permanent Secretary in the MRLGHRD was appointed to preside and oversee the operation and activities of the flood disaster response from 19 March 2008. A Flood Emergency Management Office (FEMO) comprising of four Government officials was established to facilitate flood disaster coordination in liaison with the Regional Emergency Management Units (REMU's) in the affected regions.

A coordination structure was established with links to relocation camps, Regional Health Coordinator, the REMU's and Secretary to Cabinet (see Annex I for details).

Apart from facilitating coordination, FEMO was also responsible for logistics for relief supplies, warehouse management, continuous flood disaster impact assessments, media briefing and submitting reports to Secretary to Cabinet.

Coordination at national level was not however clearly defined. The Directorate Emergency Management called two meetings for the National Focal persons at which sector Ministries including the Namibia Red Cross Society were requested to compile three months sectoral response plans.

Only the Ministry of Health submitted its response plan while other sectors have still not made any submission three weeks after the request was made.

Although response action is operating well, there are no clear plans as to how long the response actions will continue due to lack of a consolidated national response plan.

### **3. Impact of flood disaster**

#### **3.1 Number of people affected**

Preliminary reports are showing that the floods in the North and 895 in the North East of the country affected a total of 71,070 people. More communities in the rural areas that were not accessible in all five regions will now be accessed as the floodwater recedes and increase in the numbers of the affected people is therefore anticipated. It is important to note that an increasing number of the needy people directly translate to increased need of relief assistance. A total of 7,486 learners and 165 were affected in the North and North East respectively.

(See annex III on resettled people in five regions)

#### **3.2 Number of Deaths reported**

57 deaths due to drowning were reported while 4 deaths were caused by cholera and 13 deaths were due to malaria all associated with the flood disaster.

#### **3.3 Health Impact**

The major health impacts of the flood disaster were disruption of health services and outbreak of cholera and malaria. One major hospital and 17 clinics were cut off while 38 outreach points were suspended. A cumulative total of 1,118 suspected cholera cases, 16 confirmed cholera cases and 4 cholera deaths were reported by 3 April 2008. 8,841 cumulative malaria cases, 2,641 confirmed malaria cases and 14 malaria deaths were also reported during the same period. It is particularly worrisome that cholera and others related diarrhea diseases are classified as communicable, therefore increasing the risk of transmission and increasing risk of morbidity. As the situation is relatively dynamic with growing number of affected people, there is a concern about the adequacy of medical supplies being sufficient. (See Annex IV for more details)

#### **4. Response activities**

Government with support from the Namibia Red Cross Society mounted an emergency response programme that witnessed the establishment of 6 relocation camps in the Caprivi and 8 relocation camps in Oshana and Ohangwena where a total of 4,662 were housed.

The Namibian Red Cross has constructed the following flush and pit latrines as well as showers for both north and northeast regions:

**(e.g. Greenwell: 8 flush toilets and 8 showers. Oshoopala: 10 latrines, and 16 showers. Ekuku: 8 flush toilets, and 13 pit latrines. Oshikango: 6 pit latrines, and 6 showers. Okambebe: 2 pit latrines, and 2 showers. Sckhumansberg-Caprivi region, 10 pit latrines reactivated 40 more to be added.**

The construction of more pit latrines still continues and will update the information accordingly.

People affected by the floods in Omusati regions resettled themselves on higher ground near their flooded homes in fear of losing their household properties if they relocated elsewhere.

#### **5. Finance**

So far there has not been any allocation specifically for the flood disaster. The current expenditures are utilizing the donated funds and the drought relief fund. An expenditure of N\$7,174,792.82 has been incurred from the donation of N\$2,054,450.00 and there is an over-expenditure of N\$5,120,342.82. As mentioned above a total amount of N\$20 251,534.00 is required for food, fuel for helicopters fuel for vehicles and trucks, payment for hired tents, warehouse rental and security sanitation, casual laborers, telephone stationeries, cleaning material, utilities and others services. The above-mentioned amount does not include a bill of N\$176,831.33 from the Oshakati Town Council for services provided to the relocations centers from February to March 2008. (See annex for the Caprivi budget)

#### **6. Donations**

The Disaster Fund received a total of N\$2,054,450.00 from well wishers by 17 April 2008. Material donations both food and non-food to the tune of N\$1,815,329.69 were also received. (See Annexes V and VI below). The Namibian Red Cross on the other hand received a total of N\$1,622,000 and a variety of uncosted food and non-food items. (See attached list from the Namibia Red Cross)

## 7. Emergency Relief Stock

Table I below shows the relief supplies in stock in the warehouses in Oshana Region.

**Table I: Food Relief Items in stock as of 24 April 2008 Oshana Region Warehouse**

Item	Quantity in Stock	Remarks
Maize meal	3,402 x 10 Kg's	Government supplies
Maize meal	79 x 2.5 Kg's	Government supplies
Cooking oil	567 boxes x 12 bottles x 750mls	Government supplies
Tinned beef	1,466 x 425g	Donations
Ration Rolls	615 x 425g	Donations
Vienna	518 x 425g	Donations
Sugar (Brown)	1,600kgs	Donations
Sugar (White)	130kgs	Donations
Baked beans	463 x 425g	Donations
Tinned Fish	10 x 425g	Donations
Tinned fish	175 x 50g	Donations
Mixed Vegetables	347 x 425g	Donations
Rice	190kgs	Donations
Salt	19kgs	Donations

**Table II: Food Relief items in stock as of 2 May 2008 Caprivi Region Warehouses**

Item	Quantity in Stock	Remarks
Mattresses	878	GRN-supplies
Boat	1	GRN-supplies
Mineral water	60 boxes	Donations
Soup	8 boxes	Donations
Cooking oil	51 boxes	Donations
Maize meal	5000	GRN supplies

The following food items were purchased for distribution to the flood affected areas: 6,777 kilograms of maize meal, 3,408 x 750 ml's cooking oil, 8,432 x 425 grammes tinned fish, 1,414 x 420 grammes tinned beans, 398 x 2 Kg's sugar, 219 x 200 grammes tea bags, 20 x 400 grammes Lactogen, 219, 500 grammes salt and 218 toilet rolls. The total cost for the items was N\$221,205.95. (See Annex VII)

Non food items purchased for delivery to the flood affected areas included 466 tents, 2 bales of mosquito nets, 4 bales of blankets, 49 bioheat stoves, 1,000 gel stoves, 11 boxes of bioheat gel, 600 bottles of cooking gel and 1,000 mattresses. The total cost for the non-food items was N\$5, 744, 381.54. (See Annex VIII for details)

## **8. CHALLENGES:**

As is highlighted in paragraph 3 (3.1) the following are the challenges:

1. More food shall be in demand to feed rural communities who have lost their crops due to flooding.
2. Poor sanitation.
3. Difficult to determine the combined value of donations due to the absence of documentation.
4. Need for more purification water tablets.
5. Communication breakdown in constituencies to identify affected peoples due to damaged/washed roads and Bridges.
6. Lack of funds at the regional level leading to a situation where all financial issues regardless of the amount, involved are handled at the central level.
7. The centralized system has implications of delays in the provision of emergency services.

## **9. CURRENT SITUATIONAL UPTADE:**

1. The flood water level has slightly subsided in regions. However, affected people remain cut-off due to continuing running streams/flood water, and muddy roads.
2. Three (3) schools out of 94 schools, temporary closed, due to the flooding situation are now operational. However, according to a new statistic, it is discovered that nine thousand six hundred and twenty eight (9628) more schools learners have been affected in both regions.
3. Omafo-Engela bridge opened for up to 5 tons vehicles.
4. No vehicle weight limit on bridge between Omungwelume and Ongenga-rehabilitated by the Engineering regiment of the Namibian Defence Forces.
5. Flooded roads (north/northeast) remain impassable and communities in these regions still reported trapped by floodwater in the regions.
6. Reports on the flow of the rivers as of 14<sup>th</sup> April 2008, indicate that the rains have disappeared from he catchments of Namibia.
7. The water level reading at Shanalumono and Shakambebe were 0.42 while the Zambezi stood at 5.43 on 25.04.2008.
8. The figures of the relocated people are decreasing as some households have moved back to their original villages/homesteads.

Hired tents have been returned back to the owners and are replaced with GRN tents

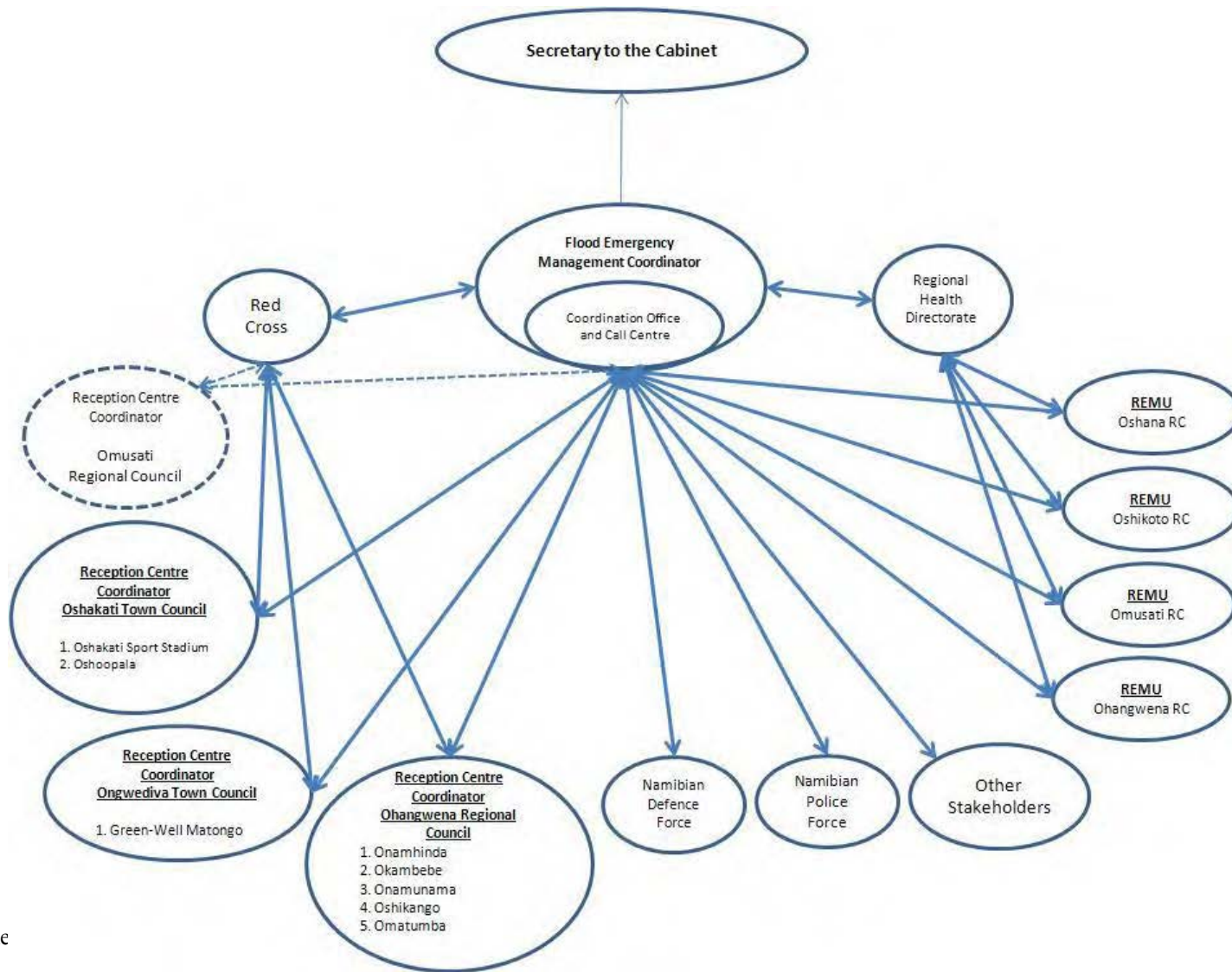
## **RECOMMENDATIONS:**

1. More donations preferably food for the affected peoples, will be needed during the recovery phase.

2. Need for counseling for the Internally Displaced People.
3. The Oshakati Town Council to be assisted with the re-planning of the town to avoid future flooding.
4. Decentralized of funds to regions for the speedy response to emergencies.
5. Government, Development Partners and the Private Sector should be prepared to continue rendering assistance to the affected as the floods effects will have a long-term impact on their livelihoods.
6. Development Partners are urged to assist government in the rehabilitation and reconstruction phase of the damaged Infrastructure.
7. Extensive needs assessment be conducted by all concerned stakeholders.
8. Implementation of a tracking system for the Non Food Items/Food Items in the regions.
9. Improvement of the storage and warehousing management in the regions.



**Annex I: Coordination Structure of the Flood Emergency Management**



**Annex I 1: Regional Summary of Impact of Flood Disaster in Omusati, Oshana and Ohangwena Regions**

<i>Description</i>	<i>Total at 24/03/2008</i>	<i>Total at 03/04/2008</i>	<i>Oshana 16/04/2008</i>	<i>Omusati 16/04/2008</i>	<i>Oshikoto 16/04/2008</i>	<i>Ohangwena 16/04/2008</i>	<i>Total at 16/04/2008</i>
<b>Total Population</b>	785738	785738	203916	228842	161007	191973	785738
<b>Affected Households</b>	5120	5155	3820	793	3126	881	8620
<b>Affected People</b>	71070	71413	26528	38766	8854	5645	79793
<b>Houses Destroyed</b>	1100	1131	608	1074	163	169	2014
<b>Fields Flooded in Hectares</b>	145218	146385	8210	139339	80	-	147629
<b>No. of Farmers</b>	1384	1729	1043	424	2305	341	4113
<b>Loss of Cattle</b>	17669	18554	5474	14505	5723	2539	28241
<b>Loss of Goats</b>	10519	10702	2683	9737	2177	1077	15674
<b>Loss of Donkeys</b>	1845	1949	591	1680	858	161	3290
<b>Loss of Horses</b>	2	2	-	2	36	-	38
<b>Loss of Sheep</b>	314	314	-	44	85	-	529
<b>Roads/Bridges Washed away or damaged</b>	23	30	11	14	-	8	33
<b>Schools affected</b>	94	91	24	50	3	2	79
<b>Learners Affected</b>	7486	17114	7486	23100	1437	27	32050

\*The main major impact of the floods has been the reported deaths of livestock in the affected areas, especially in the 4 northern regions. The situation has further exacerbated by the preceding drought conditions when the animals were starved for water and fodder.

### Annex III: Resettled people in five regions

Oshana Region	Number of Households	Resettled People
Greenwell Matongo	254	857
Oshakati Sport Stadium	318	1119
Oshoopala Centre	447	1625
<b>TOTAL</b>	<b>1019</b>	<b>3601</b>
Omusati Region <sup>1</sup>	Number of Households	Resettled People
<b>TOTAL</b>	<b>71</b>	<b>510</b>
Ohangwena Region	Number of Households	Resettled People
Oshikango	46	259
Onamunama	34	121
Onamhinda	3	12
Omatunda	10	53
Okambebe	23	105
<b>TOTAL</b>	<b>116</b>	<b>550</b>
Oshikoto Region	Number of Households	Resettled People
Omuntele	35	177
Olukonda	64	322
<b>TOTAL</b>	<b>99</b>	<b>499</b>
Caprivi Region	Number of Households	Resettled People
Schuckmansburg	89	446
Singalamwe School	-	165 (learners)
Ivilivingi	30	210
Mbalasinte	62	434
Singobeka	35	210
Impalila	40	240
<b>TOTAL</b>	<b>256</b>	<b>1705</b>
Kavango Region	Number of Households	Resettled People
<b>TOTAL</b>	<b>8 families</b>	<b>Not resettled</b>
	Number of household	Resettled People
<b>GRAND TOTAL</b>	<b>1,569</b>	<b>6,865</b>

<sup>1</sup> People displaced by the floods settled on highlands not far from their homesteads in fear of losing their household properties to thieves.

**Annex IV: Summary of health related impact in Omusati, Oshana and Ohangwena**

<b>Description</b>	<b>Total at 24/03/2008</b>	<b>Total at 03/04/2008</b>	<b>Oshana 16/04/2008</b>	<b>Omusati 16/04/2008</b>	<b>Oshikoto 16/04/2008</b>	<b>Ohangwena 16/04/2008</b>	<b>Total at 16/04/2008</b>
Outreach Points	47	145	11	98	-	36	145
Outreach Points Suspended	38	44	11	9	-	24	44
Hospitals cut off	1	1	-	-	-	1	1
Clinics	17	21	3	10	1	8	22
Cholera Cumulative	47	896	-	-	-	1118	1118
Cholera Lab Confirmed	0	16	-	-	-	16	16
Cholera Deaths	2	4	-	-	-	4	4
Deaths Reported by drowning	41	53	-	-	4	-	53
Malaria Cumulative	1312	1905	238	2166	3258	3179	8841
Malaria Lab Confirmed	999	1905	238	2166	18	219	2641
Malaria Deaths	-	11	7	7	2	3	14

**Annex V: Flood donations: 2008 as at 22 April 2008**

<b>Cheque Date</b>	<b>NAME OF THE DONOR</b>	<b>AMOUNT</b>
22.02.2008	Development Bank of Nam	10,000.00
22.02.2008	Embassy of P R of China	100,000.00
06.03.2008	Electricity Control Board	10,000.00
06.03.2008	Agricultural Bank of Nam	50,000.00
12.03.2008	Namibia Ports Authority	250,000.00
13.03.2008	Embassy of Libya	20,000.00
19.03.2008	African Diplomats	20,000.00
27.03.2008	Road Fund Administration	100,000.00
31.03.2008	Standard Bank of Namibia - Cleaning Services	16,000.00
31.03.2008	Khomas Regional Council	100,000.00
01.04.2008	Kalahari Holding	20,000.00
02.04.2008	Embassy of P R of China	640,000.00 <sup>2</sup>
02.04.2008	Bank of Namibia	100,000.00
11.04.2008	Distell Namibia LTD	15,000.00
16.04.2008	Nawegro Investment	10,000.00
17.04.2008	Botswana High Commission	613,450.00
<b>TOTAL</b>		<b>2,074,450.00</b>

---

<sup>2</sup> Amount still to be reflect in the bank account

**Annex III: Food and Non Food Donations received by 16 April 2008**

<b>Date</b>	<b>Item Description</b>	<b>Quantity</b>	<b>Amount (N\$)</b>	<b>Donor</b>	<b>To GRN for</b>
			<b>Value</b>		
18/03/2008	Fish Cans 200 ml	500		Namibian Breweries	Ongwediva
18/03/2008	Maize meal	545		Namibian Breweries	Ongwediva
18/03/2008	Bread brown	500		Namibian Breweries	Ongwediva
18/03/2008	Sugar 5 kg	250		Namibian Breweries	Ongwediva
18/03/2008	Soup 250g	500		Namibian Breweries	Ongwediva
18/03/2008	Milk 5ml	100		Namibian Breweries	Ongwediva
18/03/2008	Oil first	500		Namibian Breweries	Ongwediva
			<b>50 000.00</b>		
18/02/2008	Maize Meal 50 kg	680 bags	110 000.00	Namib Mills	Ongwediva
		(34 mt)			
19/02/2008	Clothes and Shoes	61 bales		Karas Region	DEM - Windhoek
		5 Boxes			DEM - Windhoek
21/02/2008	Mosquito Nets	3000	100 000.00	MTC	DEM- Windhoek
17/03/2008	Tents big	2	<b>40 010.00</b>	Graber Upholstery	DEM- Windhoek
27/02/2008	Meat		<b>307 986.36</b>	Meatco	Ongwediva
					Caprivi
13/03/2008	Soap Knorr	100 cartons	15 000.00	A. Wuton Trading	DEM - Windhoek
13/03/2008	Water 2500 lt	250 boxes	24 000.00	Namibia Dairies	DEM - Windhoek
07./04/2008	Cooking Oil	160 boxes	<b>35 000,00</b>	Supra sales	DEM - Windhoek
		5 boxes			DEM - Windhoek
16/04/2008	Tinned Fish	11764	<b>1, 000 000.00</b>	NAMSOV	DEM - Windhoek
		Boxes			
16/04/2008	Tents	25	<b>133, 333.33</b>	Tullow Kudu Oil	DEM - Windhoek
	<b>Total</b>		<b>1,815,329.69</b>		

#### Annex IV: Food items purchased by GRN and distribution location

Date	Item Description	Quantity	Amount (N\$)	From	To
05/02/2008	Maize Meal 10 kg	128		Pelu trading	Ohangwena
05/02/2008	Cooking Oil 750ml	1008		Pelu trading	Ohangwena
05/02/2008	Tinned Fish 425 g	1657		Pelu trading	Ohangwena
	<b>TOTAL</b>		<b>27,338.91</b>		
07/03/2008	Maize Meal 10 kg	500		Onawa Mini Market	Ohangwena
07/03/2008	Oil 750ml	600		Onawa Mini Market	Ohangwena
07/03/2008	Tinned Fish 425 g	2160		Onawa Mini Market	Ohangwena
	<b>TOTAL</b>		<b>48,298.00</b>		
22/02/2008	Maize Meal 10 kg	1100		Fresh Market	Oshana
22/02/2008	Oil 750ml	1100		Fresh Market	Oshana
22/02/2008	White Suger ikg	219		Fresh Market	Oshana
22/02/2008	Tinned Beans 420 g	1314		Fresh Market	Oshana
22/02/2008	Tinned Fish 425 g	1314		Fresh Market	Oshana
22/02/2008	Tea Bags 200 g	219		Fresh Market	Oshana
22/02/2008	Lactogen 1 + 2 400 g	20		Fresh Market	Oshana
22/02/2008	Salt 500 g	219		Fresh Market	Oshana
	<b>TOTAL</b>		<b>68,911.45</b>		
09/02/2008	Maize Meal 10 kg	164		Eluwa Store	Omusati
09/02/2008	Maize Meal 20 kg	186		Eluwa Store	Omusati
	<b>TOTAL</b>		<b>19,536.60</b>		
01/02/2008	Tinned Beans	100		Woerman Brock	Oshana
01/02/2008	Tinned Fish	2400		Woerman Brock	Oshana
01/02/2008	Maize Meal 5 kg	104		Woerman Brock	Oshana
01/02/2008	Maize Meal 2.5 kg	256		Woerman Brock	Oshana
01/02/2008	Toilet paper	44		Woerman Brock	Oshana
01/02/2008	Toilet paper	36		Woerman Brock	Oshana
01/02/2008	Toilet paper	138		Woerman Brock	Oshana
01/02/2008	Sugar 2 kg	398		Woerman Brock	Oshana
	<b>TOTAL</b>		<b>40,001.00</b>		
01/04/08	Maize Meal 2.5 kg	5000		Kamunu	Caprivi
	<b>TOTAL</b>		<b>195 000.00</b>		
09/04/08	Baked beans 420 gr	1000		Kamunu	Caprivi
09/04/08	Cooking oil 750 ml	800		Kamunu	Caprivi
09/04/08	maize meal 425 gr	1000		Kamunu	Caprivi
	<b>TOTAL</b>		<b>298 660.00</b>		
25/04/08	Maize meal 12.5 kg	5000		Namibi Mills	Caprivi
	<b>TOTAL</b>		<b>193 750.00</b>		
09/02/2008	Cooking oil 750 ml	700		Riana W/Sale	Omusati
09/02/2008	Tinned fish	900		Riana W/Sale	Omusati
	<b>TOTAL</b>		<b>17,120.00</b>		
	<b>GRAND TOTAL</b>		<b>908,615,95</b>		

**Annex V: Non-food items - Purchased by GRN**

Date	Item Description	Quantity	Amount (N\$)	From	To
11/03/2008	Rental of Tents	6	25,500.00	Shipiki Multi Enterprises	Oshana
01/03/2008	Blankets	2 bale		DEM - Windhoek	Omusati
05/03/2008	Jet A1 Fuel	5500 L	48,569.08	BP Namibia	Northern Region
08/03/2008	Repair Cooling Unit Truck No. NDF 4336	1	3,550.00	J. Haipanda Air Cons	DEM - Windhoek
13/03/2008	Tents (small)	11 each		DEM - Windhoek	Oshana
13/03/2008	Blankets	2 bales		DEM - Windhoek	Oshana
13/03/2008	Mosquito nets	1 bales		DEM - Windhoek	Oshana
13/03/2008	Tents (big)	1 each		DEM - Windhoek	Oshana
05/03/2008	Bioheat stoves	49 each		DEM - Windhoek	Oshana
05/03/2008	Cooking Gel	11 boxes		DEM - Windhoek	Oshana
05/03/2008	White Sugar	13 boxes		DEM - Windhoek	Oshana
06/03/2008	Jet A Fuel	5500 L	42,130.00	BP Namibia	Caprivi
17/03/2008	NDF 4411 Samil 50	1	10,795.58	Bomac Motors	Caprivi
17/03/2008	NDF 4417 Man Truck	1	6,735.24	Bomac Motors	Caprivi
17/03/2008	NDF 4333 Kwee 100	1	9,382.43	Bomac Motors	Caprivi
17/03/2008	Muzii	373	52,220.00	Mukusi river cruise	Caprivi
17/03/2008	Mpukano	60	8,400.00	Mukusi river cruise	Caprivi
17/03/2008	NDF 5366 Casper water tank	1	8,630.65	Bomac Motors	Caprivi
19/03/08	SA PINE	500	55,450.00	Bargain Building supplier	Caprivi
19/03/08	Gum Pole	2100	168,000.00	Bargain Building supplier	Caprivi
19/03/08	Nails	50	750.00	Bargain Building supplier	Caprivi
20/03/08	Petrol (unleaded)	1050 L	8,221.50	Katima truck stop	Caprivi
20/03/08	Outboard oil	3 L	594.00	Zambezi Shell	Caprivi
20/03/08	Willard battery	1 L	625.00	Zambezi Shell	Caprivi
28/03/08	Tubes	3	1,570.80	Tren Tire	Caprivi
28/04/08	Unleaded fuel	2100 L	17,493.00	Katima truck stop	Caprivi
28/04/08	Service and labour	1	747.50	Sharp engineering	Caprivi
28/04/08	Outboard oil	40 L	820.00	Katima truck stop	Caprivi
28/03/08	Triangle	3	526.50	Tren Tire	Caprivi
20/03/08	Petrol	210 L	1,570.80	Zambezi Shell	Caprivi
17/03/2008	Tents big	450 each	5,092,372.50	Graber Upholstery	DEM-Windhoek
19/03/2008	Gel Stoves	1000		Shoprite	DEM - Windhoek
19/03/2008	Gel	600 bottles	154,784.00	Shoprite	DEM - Windhoek
10/4/2008	Mattresses	1000	198,400.00	Namib Foam	DEM-Windhoek
<b>GRAND TOTAL</b>			<b>6,609,254.00</b>		



**Annex VI: Floods Donations versus Required Resources for 34,000.00 beneficiaries 5667 Households**

<b>Required resources</b>	<b>Number of resources needed</b>	<b>Obtained/Donated</b>	<b>Needed items</b>
<b>Shelter</b>			
Tarpaulin for temporary shelter	11,334.00	160	11,174
Gum plastic sheeting rolls	700 x 6m x 6m	50	650
Poles	2000 x 3m	-	650
Rolls of Rope	9 x 50 m	-	2000
Clout mails	120 kg	-	120 kg
Hammers	40	-	40
Tents	500	10	490
<b>Water and Sanitation</b>			
Water purification tablets	2,040,000	915,000.00	1,125,120
Jerry cans	5667	4800	867
Construction of latrine	200	-	200
Chlorine disinfectant	200 x 20 bags	100	
<b>Water and Sanitation</b>			
Water purification tablets	2,040,00.00	915,000.00	1,125,120
Jerry cans	5667	4800	867
Construction of latrines	200	-	200
Chlorine disinfectant	200 x 20 bags	100	100
Construction of showers	200	-	200
Gel stoves	1000	-	1000
<b>Health and hygiene</b>			
Bars of soap	68,004.00	4000	64,004
Hygiene kits	3000	1300	1,1700
First Aid kits	50	3	47

<b>IEC Materials</b>	100,000.00	-	100,000
<b>Others</b>			
Blankets	17,001.00	4,900.00	12,101
Mosquitoes nets		5,000-SMA	Enough for now
Cooking sets	2000		
<b>Monetary</b>		N\$ 1,622,000.00	
<b>Fuel</b>	N\$120,000.00	N\$6,000.00	114 000
<b>Vehicles</b>	6	2	4

9. .